



Large Vehicle K-TAG Installation Instructions

Customer Service
Mon-Fri from 7:30am - 5:30pm (No holidays)

(316) 652-2650
ktag@ksturnpike.com
www.myktag.com

General instructions and guidelines

- If you think your vehicle may have a metallized windshield, contact K-TAG customer service at 316-652-2650.
- You **MUST** correctly and permanently install the K-TAG on the windshield before driving through the toll plaza. Do not attach the K-TAG to your visor or other temporary location.
- In order for your K-TAG to work properly and ensure your smooth passage through the K-TAG lane, you must properly mount your K-TAG in your windshield. Do not wave the K-TAG or hold it on the inside or outside of your vehicle as you approach the toll plaza.

Installation Location

If the truck does not have a center bar, the K-TAG should be centered 3" from the bottom of the windshield. If the truck has a center bar, position the K-TAG 2" to the right of the center bar (looking from the inside of the vehicle), and 2" from the bottom of the windshield (**Figure 1**).

Be sure your K-TAG is not mounted within 2" of any other transponders or metal object, such as windshield wipers, as this could interfere with the signal.

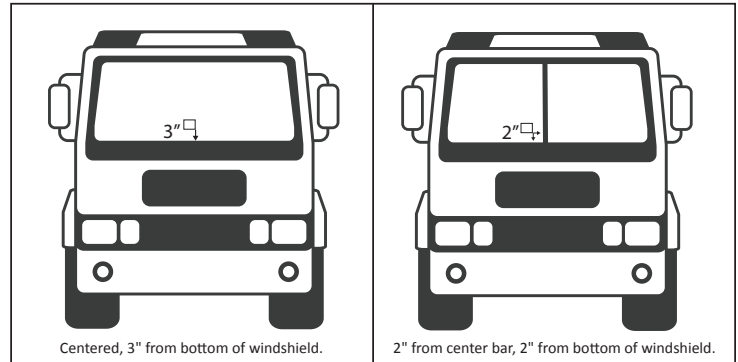


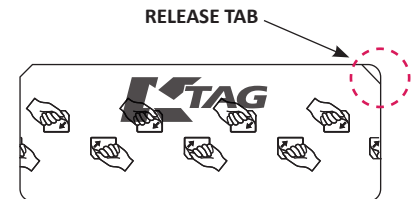
Figure 1 – K-TAG Location for Large Vehicles

Installing your K-TAG

Install the K-TAG when the windshield's temperature is above 50°F (10°C). In colder climates, use your heater/ defroster to warm the windshield before installing the K-TAG.

Note: Once the K-TAG is installed, it cannot be repositioned or moved.

1. Clean and dry the area where the K-TAG will be installed with commercial glass cleaner and paper towels.
2. Hold the K-TAG so that the removable liner is facing you. Locate the release tab on the upper right corner of the K-TAG (**Figure 2**). Work the tab back and forth a few times to loosen it. Slightly pull the tab and bend it toward you to detach the tab, peel the release liner, and expose the adhesive.
3. With the adhesive side facing toward the windshield but not touching the glass, move the K-TAG to the desired location, and then press one edge to the glass.
4. Adhere the K-TAG to the glass by rubbing your thumb around the edge of the entire K-TAG. Be sure to rub over the K-TAG's chip to remove as much air as possible (**Figure 3**).
5. Step outside of your vehicle and look at the K-TAG through the windshield. There should be minimal air around the ASIC chip. Refer to **Figure 3** for examples of properly installed K-TAGs.



Note: Make sure the liner is completely removed and the K-TAG is completely attached to the windshield.

Figure 2 – Location of Release Tab

There should be minimal air around the ASIC chip



Figure 3 – Example of properly install K-TAG

Removing the K-TAG

If you need to remove the K-TAG from your windshield, peel of the tag starting at one corner, then clean any adhesive residue remaining on the windshield using isopropyl alcohol. Discard the used K-TAG.

Note: Once you remove the tag, you cannot reuse it. Be sure to deactivate the old K-TAG by going to myktag.com or by contacting K-TAG customer service. You can order a new tag at that time, if necessary.